

Official Pigment Guide

www.phishop.com




PHISHOP

UPGRADE TO

PhiApp Pro

Try out the new features



Features:

- Add Size and Position of the Brows
- Choose the Perfect Pigment Color
- Create a Before and After Photo
- Select Spine and Set Eyebrow Strokes

[CLICK HERE](#)

Which colour is suitable for my client?

Never choose the wrong color again!

Use our Pigment Guide to find the perfect color match* for your client. As a microblading artist, it is important to refer to the client's natural hair color to get the most realistic and natural result.



We can help you with that!

Here you will find information about our pigments, and the differences between them. We will explain which one to use with which natural hair color**.

Do not forget to pay attention to the skin type!

SUPE Pigments

The **SUPE formula** is the fifth generation of PhiBrows pigment. These pigments have been developed in such a way that the shade does not change on the skin over time.

By nature, yellow is the most unstable color. It tends to cause the pigment to turn grey or reddish on the skin as it fades.

[CLICK HERE](#)



Therefore, we have compressed the yellow pigment to the same stability as the black and red. This allows equal stability of all 3 colors (red, yellow and black) to be mixed into one pigment*** that can form a range of shades. The increased stability of the yellow pigment prevents the applied color from turning into an undesirable shade until it fades completely.

SUPE pigments do not need to be additionally mixed with base colors to make them warmer. This is because the pigments are stable enough to not fade into gray hues.



Additionally, **SUPE Pigments** offers the following advantages:

- no illegal quantities of heavy metals
- no magnetic reactions
- no shaking required before use
- with proper storage, no oil separation

SUPER Pigments

Every pigment which is applied remains in cellular organisms (our body) forever. Our vision was to produce extremely clean and stable pigment colors. The biggest challenge was to create pigment particles that would not be rejected by the cells as foreign bodies. If this happened, the pigment colors would not be vivid or durable.

We have managed to achieve exactly that!

SUPER pigments have set completely new standards in the fields of microblading, permanent make up, and even tattoos. The launch of the SUPER Pigments was the first time globally that such high standards of pure pigments were on the market.

[CLICK HERE](#)





Another important characteristic of the **SUPER pigment** formula is bioinert coating.

Each pigment particle is coated in this material, which prevents the release of any unwanted substance. This ensures no negative interaction between the pigment and the body tissue.



The purity of the pigment enables:

- faster healing
- extreme stability
- top health and safety of clients

PhiBrows Pigments Color References



Brown 1

Naturally blonde or
light brown hair



Brown 2

Naturally brunette
hair color



Brown 3

Dark brown, almost black
natural hair color



* The pigment colors need to be chosen according to the natural hair color of the client

** Color References also apply to the SUPE pigments.

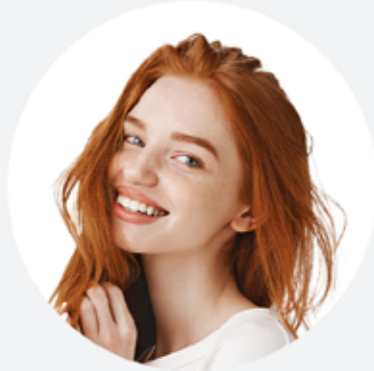
*** By mixing Yellow, Black and Red together, you can get any pigment, from Golden Brown to Brown 3. It is very important that each pigment drop is the same size when mixing colors! Please refer closely to microblading color theory when blending pigments.

PhiBrows Pigments Color References



Golden Brown

Extremely light natural
hair color



Fox

Naturally red
pigmented hair color



Black

Naturally black hair



* The pigment colors need to be chosen according to the natural hair color of the client

** Color References also apply to the SUPE pigments.

*** By mixing Yellow, Black and Red together, you can get any pigment, from Golden Brown to Brown 3. It is very important that each pigment drop is the same size when mixing colors! Please refer closely to microblading color theory when blending pigments.

You may also be interested in...

PhiBrows Disposable Tool with Bold Blade 10pcs Box

This disposable tool is designed to apply pigments into the skin during microblading treatments. The tool is equipped with optimized grip and a blade made up of 16 needles and can create fine individual hair strokes.

One box consists of 10 individual disposable tools.

[CLICK HERE](#)



PhiBrows Disposable Tool Blade and Shade 10pcs Box

This disposable tool is a necessity to achieve flawless PhiShading looks. The tool allows you to draw precise single strokes with the 304 U Blade, as well as to create fine shading using the 3R Blade.

[CLICK HERE](#)

PhiBrows Practice Ink

To master your microblading technique on practice latex, you can now use the Phi Practice Ink. It has the same consistency as our PhiBrows Pigments and creates clear contrast for clear stroke visibility. Practice your skills without limiting your pigment resources!



Phi Mixer

The Phi Mixer allows pigments to be diluted or thoroughly blended, so that you get an evenly mixed composition. One package contains 5 mixing sticks.





PHIACADEMY

**Do you have questions about our product
ranges, uses, or other concerns?**

Our Customer Service is happy to help you!

**We are here to find the best possible
solution for any of your requests.**



8:00 - 18:00 Monday - Friday Central European Time (CET)

Feel free to contact our customer care:

+43 1 375 1618 1618

Or use our toll-free line: 00 800 1618 0000